

Enjoy Izu Oshima Geopark and More! Enjoy Everything Izu Oshima Has to Offer With a Guided Tour!



Why are Oshima Milk Cookies famous?

Who is "Anko-san"?

Why are there shrines here?

Why is there a black desert on the mountain?

How can plants survive in the lava rocks?



Your Geo Guide can help answer these questions and more as they take you around the Geopark.

Your Geo Guide is certified by Izu Oshima Geopark and open for reservations!
Half Day Rate (2+Guests): 5,000 yen or more (excluding tax) *Sept., 2021
[Contact] Oshima Tourism Association (TEL:+81-4992-2-2177)

I understand now!

Let's go first when we arrive at Okata Port!



Geo Station Okata Port

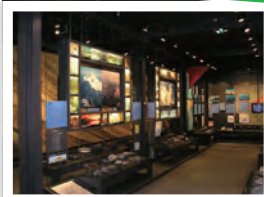
Above the Okata Passenger Terminal on the second floor, you can get the basic information and the latest information of Izu Oshima Geopark. Please use it when you arrive to confirm where you will go around, and when you return, to make your next plan! 【Opening】 The day when that departure port is Okada Port

Izu Oshima Volcano Museum

The museum introduces guests to not just Izu Oshima's volcano, but volcanoes from all over Japan and the world. Enjoy a screening of a special video that showcases all of the secrets and charm that Izu Oshima has to offer.

【Opening】 9:00a.m.-5:00p.m. (Closed 11 Days a Year) 【Charge】 Adults: 500 Yen, Elementary and Junior High School Students: 250 Yen

A Volcano Collection!



Check it out before hiking!

Geopark Exhibition at the Summit Entrance

【Opening】 Sat, Sun, Holiday 9:30a.m.-15:00p.m. Outer rim Lookout immediate side. Geoguide is resident. You can also see the video of the 1986 eruption!



GEO FOOD

Kusaya

Don't let the smell fool you, Kusaya is quite delicious! This dish of salt-dried and fermented fish is known for its pungent odor, but is a delicacy on Izu Oshima. While it might seem strange, kusaya's preparation is the product of harsh island life, where historically resources were hard to come by to the remote island.



Ashitaba

Ashitaba is a leafy green vegetable in the carrot family that is known for its hardiness. It's said it grows so fast that it will completely regrow the day after being picked. Ashitaba has grown naturally throughout the island since old times and has been a vital part of the island's culture.



Milk

Long ago Izu Oshima was once called "Holstein Island" (after the breed of cow) because of its prosperous dairy farming industry. Holstein cattle prefer mild climates. With its gentle sea breeze and mineral-rich grass, Izu Oshima is the perfect place for them to call home.



So many amazing sights to see on Izu Oshima!

Izu Oshima Geopark

IZU OSHIMA GEOPARK



Find the secret entrance!

Unique fish habitats created from underwater lava eruptions!!



Enjoy the beautiful flowers no matter the season!



Find the hidden hearts on the volcanic island!

Access to Izu Oshima Geopark

ACCESS

Getting to Izu Oshima By Ship

Tokyo/Takeshiba	Approx. 1 hr. 45 min. by high speed jet ferry	Izu Oshima Motomachi Port or Okata Port
Atami Port	Approx. 6 hr. by overnight cruise ship	
	Approx. 45 min.	

Contact /Reservations: **Tokaikisen**
9:30am-8:00pm
+81-3-5472-9999

Depending on weather and ocean conditions, ships will depart from either Motomachi Port of Okata Port. The travel route of Kurihama, Tateyama, Ito, Inatori, and Osanbashi Pier, subject to change depending on the season.

Getting to Izu Oshima By Plane

Chofu Airport	25 min.	Oshima Airport
---------------	---------	----------------

Contact /Reservations: **New Central Air Service**
+81-422-31-4191

Transportation and Accommodation on Izu Oshima

Contact Oshima Tourism Association
(8:30am-5:00pm) TEL: +81-4992-2-2177



Search traffic on the island with "Izu Oshima Navi"

Izu Oshima Geopark Promotion Committee
Executive Office: Oshima Town Tourism Division Geopark coordination unit
100-0101 1-1-14 Motomachi, Oshima-machi, Tokyo, Japan
TEL:+81-4992-2-1446, E-Mail: c010601@town.tokyo-oshima.lg.jp (*Sept., 2021)



Summit area

Red Valley

1 Akadare

Akadare's stunning red canyons are the result of the erosion of volcanic deposits. It's a perfect spot to take view other Izu Islands on the sea spreading in front of the valley.

1 Outer Rim Lookout

By viewing the black lines on Mt. Mihara you can trace the lava flow created during the eruption in 1986.

Chocolate Coming From the Mountain?!



2 Pahoehe Lava Flows of 1777-78

Less sticky lava may flow out and create such wrinkles.



3 Tip of the 1986 Lava Flow

Lava overflow from the eruption stopped at the base of the mountain.

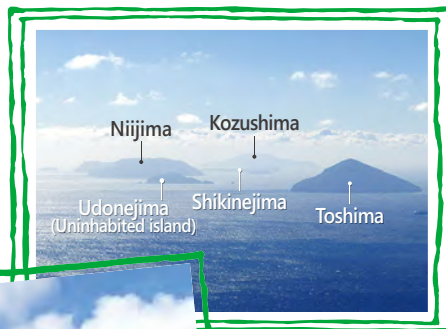


How Did This Happen?



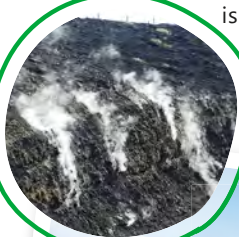
5 Path Around the Crater

The 360° ocean view gives you a perfect opportunity to see Mt. Fuji, Izu Peninsula, Izu Islands, Boso Peninsula, and Miura Peninsula.

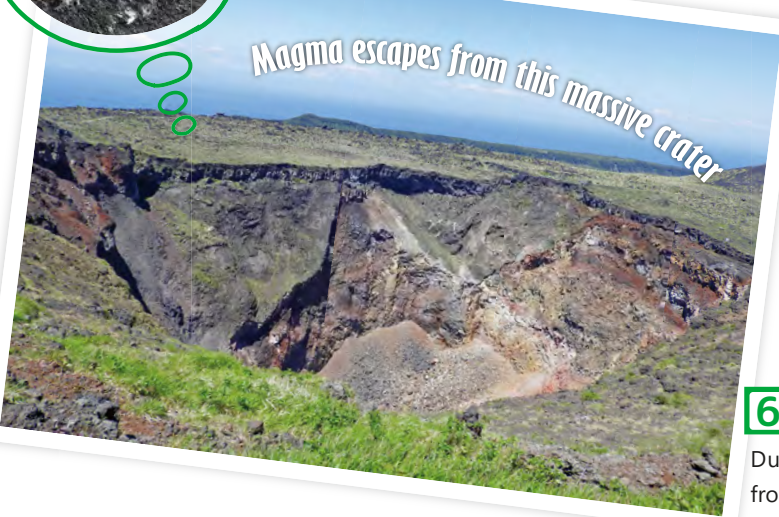


4 Splashes of Magma

This formation traveled down the lava flow from the crater like a raft on a river.



Magma escapes from this massive crater



6 Mt. Mihara Summit Pit Crater

During the 1986 eruption magma overflowed from the volcano, completely filling up the crater.

8 Ura-Sabaku Desert

Strong winds blow off plant seeds and germination, maintaining this desert landscape.

A black desert made from volcanic rock and ash

7 Fissure-Eruption Craters

Fissures opened in the ground and spewed out lava.



9 Geo Rock Garden

A fissure eruption has created a garden full of these strange rocks in less than a day.



Growing Reynoutria japonica



10 Vegetation Regeneration Trail

Regeneration of life starts from pioneer plants adapted to harsh environments. Along this trail, you can take in the changing landscape as lava turns to forest ground.

The Road becoming Forest Someday



Sunlight Tunnel in the shade of trees



The Flowers of Izu Oshima

As the flowers bloom, the black and green wilderness becomes gorgeous.



Oshima Azalea

Lilium auratum var. platyphyllum

Coastline Area

Like a giant layered cake

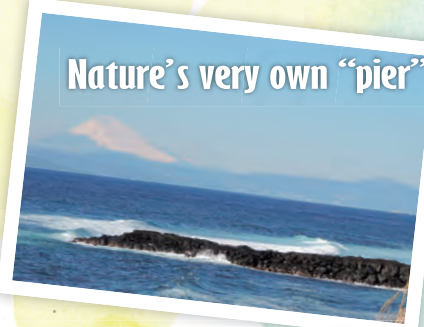
4 The Great Road Cut

The layers of this huge are the result of about one hundred of eruption over 20,000 years.



1 Akappage (Red Hill)

Erupting near the coast, low-viscosity lava splash piled up around, forming a hill.



2 Cape Nagane

The lava flow of the fissure eruption on the hillside went down the stream and poured into the sea, after which only the hard lava remained as a cape.



5 Sanohama Beach

It is a black sandy beach that is made up of broken lava and volcanic ash flowing through the swamp.



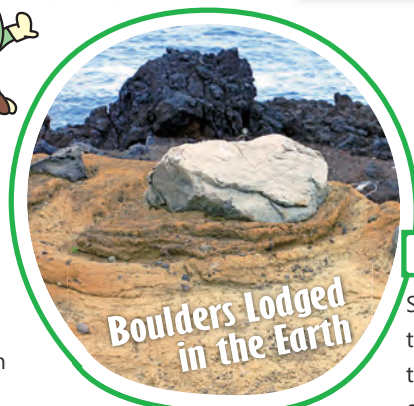
3 Motomachi Hamanoyu (Open Air Hot Spring)

Hot springs in Motomachi area are the result of 1986 eruption.



6 Imasaki

The large and small stones are seen on the surface of the cliff, which indicates that the eruption was intense.



7 "Bomb Sags" of the Toshiki Coast

Stones that flew in the air due to intense eruptions left traces that crashed into the ground of the deposited volcanic ash. (The cliffs have been eroding and the rocks are collapsing.)



8 Habu Port (Explosion crater)

Originally a crater lake, a tsunami caused the lake to connect to the ocean. In 1800, Heiroke Akihiro expanded the connection, opening Habu Port.



Gray stripes on cliffs are old traces (dykes) of ancient magma that once pierced Earth.



9 Kakiyara Beach

A lot of "volcanic beans stones" can be found in the surrounding ground.

10 Fudeshima

Years of waves have eroded this old volcano into the small island it is today.



Traveling around Izu Oshima!



This map was created with the approval of the Geographical Survey Institute using a 1/25,000 topographic map issued by the Institute. The authorization number: 平29情使、第419-GISMAP39996号

The Flowers of Izu Oshima

Camellia japonica which is suitable for well-drained land with warm, heavy rain, has grown on the island since the Jomon period.

The islanders have found many uses for the resilient camellia including using them as windbreaks and for creating charcoal and oil.



Throughout the year you can view beautiful flowers peppering the coastline with their vibrant colors.



The best time to see Oshima's cherry blossoms depicting the volcanic wilderness in beautiful pale white is in April.



11 Sakurakabu Cherry Tree

The giant cherry tree that survived the lava field was once a landmark for voyage.



Experience the living earth at Izu Oshima Geopark!

VOLCANO

Izu Oshima Birth Story



The history of Izu Oshima begins with the story of old volcanoes lined with the sea.

Beginning about 1 millions years to about 100,000 years ago, three volcanoes existed in this chain.



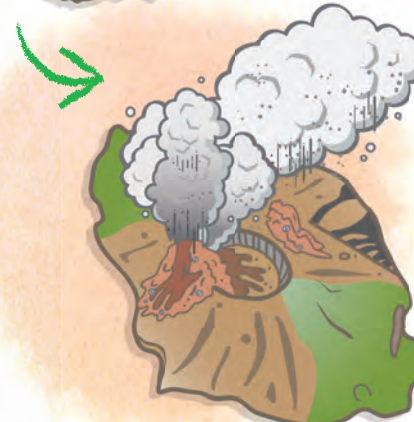
Following countless eruptions, these volcanoes became dormant, and were slowly eroded by the sea.

Tens of thousands of years ago, a new volcano began to form on the ocean floor and became active. This new volcano was the beginnings of what would become Izu Oshima.



The new volcano erupted several times, covering the remains of the original three islands.

The new volcano erupted so many times that it completely absorbed the original three volcanoes, becoming one volcanic island.



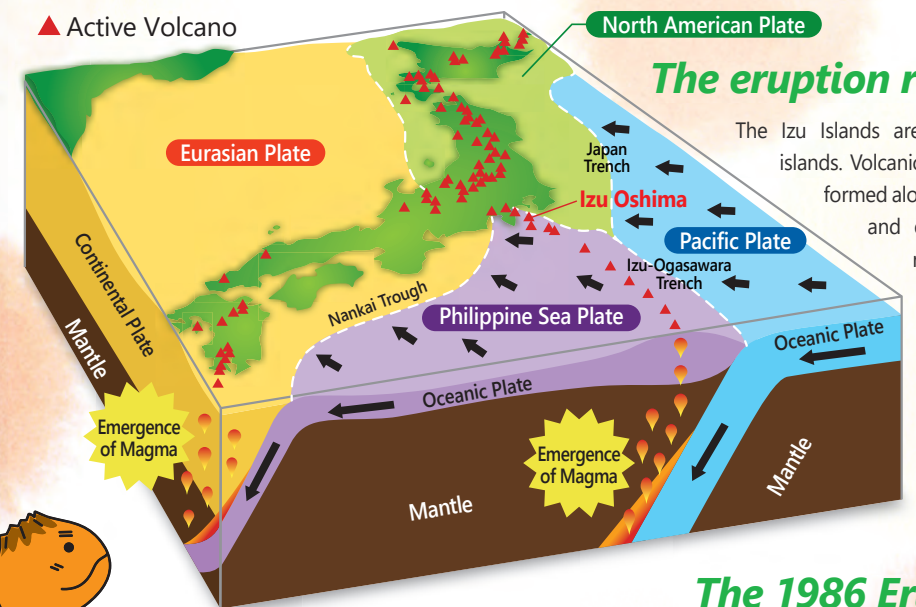
About 1700 years ago, a massive steam eruption occurred at the summit.

A large amount of rock and soil flowed down the island, and the peak collapsed to form a caldera.



The huge eruption that began in 1777 created a new mountain in the caldera – Mt. Mihara.

Since then, I have repeatedly repeated lava flows in the caldera. The eruption outside the caldera that occurred in 1986 was the first in about 560 years.



The eruption repeats

The Izu Islands are all volcanic islands. Volcanic columns are formed along the trench, and eruptions are repeated.

The 1986 Eruption

November 15th, 1986



The eruption started at the summit.

November 19th, 1986



The lava overflowed into the caldera.

November 21th, 1986



A volcanic fissure formed on the northern side of the caldera, spilling lava down the northwestern base of the mountain, and reaching about 200 meters from private house. The eruption triggered an island-wide evacuation that lasted an entire month.

Life on the island is with "Gojinka".

While the volcano can cause disasters that threaten the calm, normal life of the island. However, except during an erupting moment, gives the benefits that is indispensable to the living of the island. Long, long ago exploding magma would create a red sky that the islanders called "Gojinka" which the people revered.

The Volcano's guard Volcano observation equipment



All over Izu Oshima, the Japanese government and universities have installed more than 100 sensors such as seismographs, tiltmeters, and surveillance cameras. The Japanese Meteorological Agency monitors these systems for volcanic activity always. In the event that the sensors pick up any activity, residents will be notified by Disaster Prevention and Administrative Radio System. Always remember, while beautiful, Izu Oshima is still an active volcano. Always be prepared for any sort of volcanic activity that could occur. Please check the Japanese Meteorological Agency website for any updates on Izu Oshima's volcanic activity.

Activity status of Izu Oshima volcano -JMA



Enjoy connecting to the earth at Izu Oshima Geopark!

Use all five senses to truly connect with Izu Oshima's wide variety of nature. Witness the connection between people and place that makes the island so special. We hope to share your unique Izu Oshima experience with you and enjoy everything the island has to offer!

